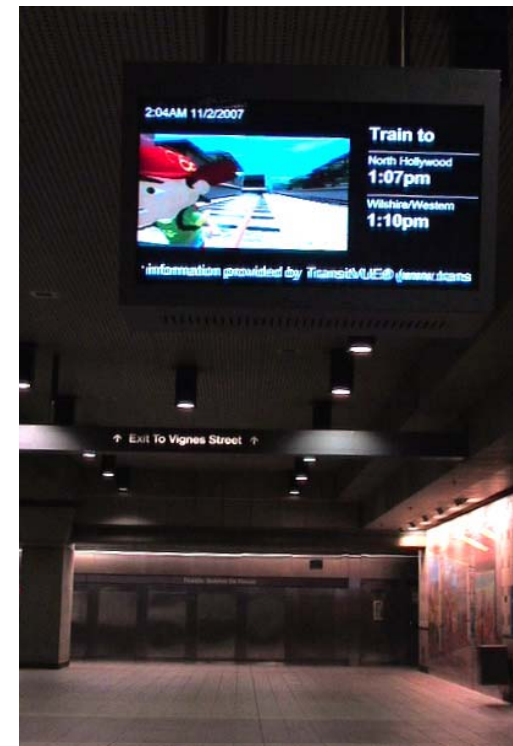


TransitVUE® Real-Time Transportation Passenger Information System (TPIS)



...TransitVUE® TPIS Real-Time Transportation Passenger Messaging & Information System

GENERAL DESCRIPTION

- TransitVUE TPIS is a full-motion, real time, high-quality digital variable passenger messaging and information display system.
- TransitVUE TPIS is fully integrated and composed of a common communication infrastructure and database to provide automated control of critical messaging for light rail, subway, train, bus, airport, port and government applications.
 - The system utilizes an open architecture and can be managed from a centralized or remote location.
 - Messages can be pre-recorded and displayed in a real time, full-motion, and up to high-quality WXGA video format.

These messages can include, but they are not limited to:

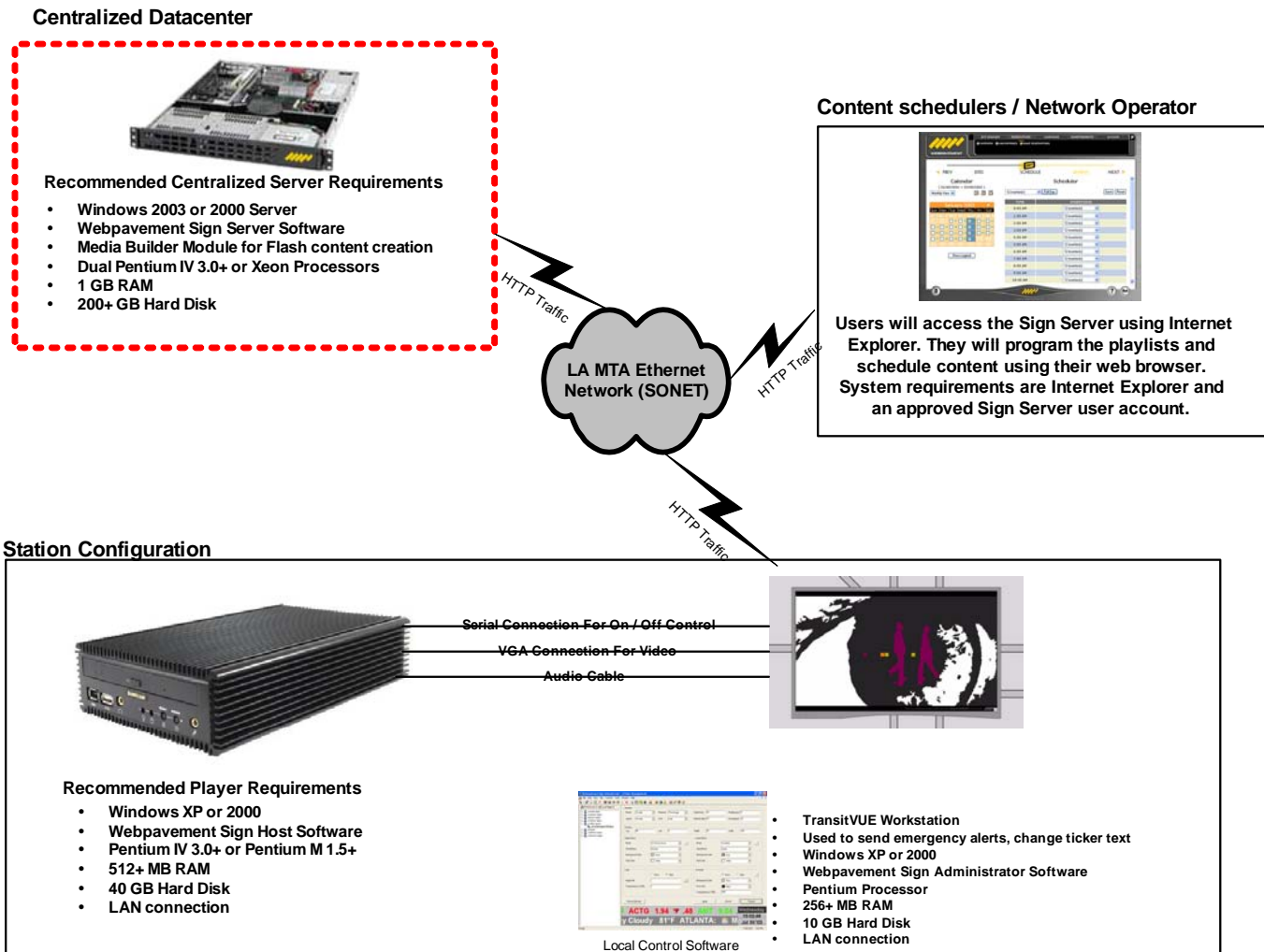
- Arrival and departure times, which is automatically updated
- Information on routes and final destinations
- Information on service interruptions or delays
- Public Service Announcements
- General safety and warning messages in variable formats
- Emergency evacuation procedures
- Day, date and time synchronized to a master clock
- 3rd party advertising
- Other pre-recorded messages to be determined by the customer

SYSTEM CONNECTIVITY

- Messages can be launched from the TransitVUE content display server to multiple TransitVUE *smart* monitors station media players that control a bank of monitors displaying the same messages.
- Each TransitVUE station media player will support interconnection of multiple LCD or LED displays and store messages locally in non-volatile memory before forwarding them to the individual displays.
- The TransitVUE TPIS is consistent with ADA requirements.
- Multiple displays can be connected to a specific player at each location via wireless, CAT 5e/6 copper cable or optical fiber.

- Video messages can be presented in various Controller-selectable combinations of graphic, dynamically animated, or with visual effects including overlaying of multiple messages and ticker tape scrolling on a single display.
- Messages shall be displayed in turn, according of the order of priority as determined by the customer.
- The TransitVUE TPIS can be remotely configurable by the Controller.

System Architecture



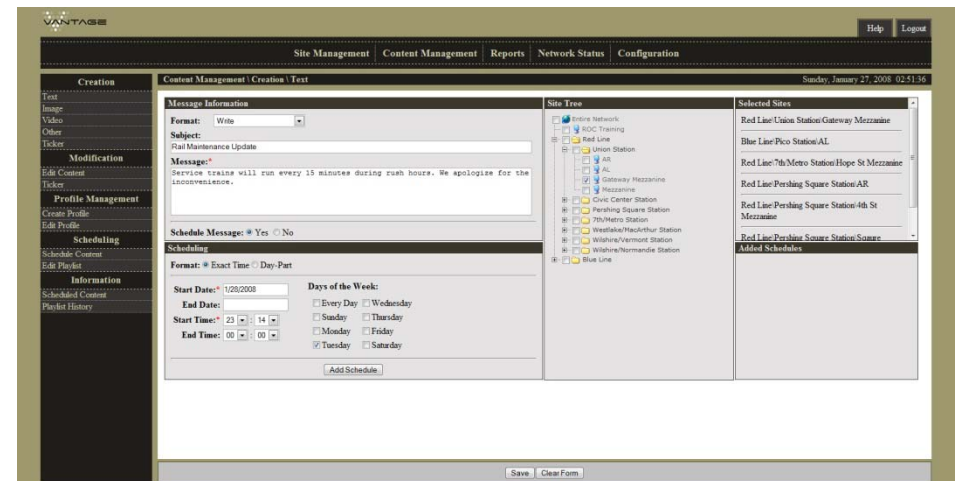
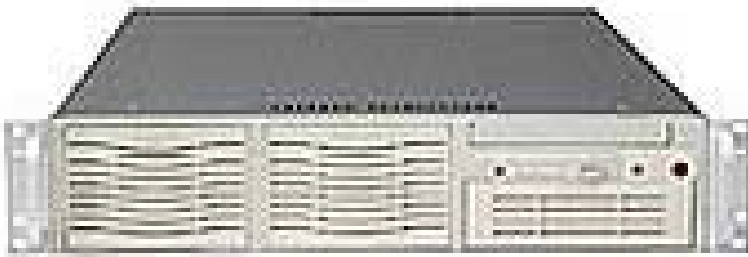


SYSTEM COMPONENTS

- TransitVUE CMS-1000A Content Display Server with Sign Server Management Software
- TransitVUE MP Series Media Players with Sign Host Software
- TransitVUE Standard and *Smart* LCD Monitors
- TransitVUE FOX Series Video Extenders
- TransitVUE Indoor & Outdoor Enclosures

... ***TransitVUE® TPIS Real-Time Transportation Passenger Messaging & Information System***

TransitVUE CMS-1000A Content Display Server with Sign Server Management Software



... **TransitVUE® TPIS Real-Time Transportation Passenger Messaging & Information System**



- The TransitVUE CMS-1000A content display server with Sign Server management software is a web-based server that centrally automates all content management and distribution for managing your TPIS network.
- Play lists and schedules are programmed using your web browser and stored in a central database for distribution to your network of media players.

... TransitVUE® TPIS Real-Time Transportation Passenger Messaging & Information System



TransitVUE CMS-1000A Content Management Display Server features include:

- Windows 2000, XP or 2003 Server OS compliant
- Supports the uploading of Windows Media Video, Graphics, Power Point, AVI, MPEG 1-2-4, URLs, DivX and Macromedia Flash files and stores these files in a specified portfolio
- Displaying pre-programmed messages on the relevant station display unit at the specified time or sequence
- Displaying pre-recorded messages as determined or produced by the customer
- Allows the Controller to input pre-recorded messages and display them at any station display unit, a group of stations or system wide

... TransitVUE® TPIS Real-Time Transportation Passenger Messaging & Information System



- Automatically announce arrival and departure times, route, final destination, etc ...
- Displaying not in service notifications, interruptions or delays
- Displaying Public Service Announcements, warning, prohibitive and general safety messages as well as emergency evacuation procedures
- Files stored in a specified portfolio can be organized in a sequence show or rotation show. The shows or individual files can then be set in a default play list or scheduled using a calendar or detection interface. Individual files can also be overlaid and shown on the same display.

- Capability of running a self-diagnostic operation periodically or manually by the Controller
- Malfunction alarm indicators
- Sign Server graphical user interface will allow a simple step-by-step process for scheduling messages.
- Reports can include player, display unit and time broadcast (e.g. location report) and a proof of performance (e.g. playback report). The location report will allow the Controller and supervisory personnel to review all activity as well as system performance at each station on the network. The playback report should map ridership to the actual messages – or number of announcements – that were run.



- Allows for multiple registered users. An approval center will grant a level of permissions for each registered user
- Segment network into groups for easier station scheduling
- Reporting for checking the TPIS network sales activity and media buy availability for any date range. Via the web, you can check available advertising spot inventory, space sold, unsold, where and when. The media buyer report feature is great if you have 3rd party media buyers/planners selling space on your network.
- Low cost of ownership. Since Sign Server is a web based application, no client software is required for installation on users' computers. Upgrades to Sign Server will never require changes on users' computers.

... TransitVUE® TPIS Real-Time Transportation Passenger Messaging & Information System

TransitVUE® MP Series Media Players

MP-225



MP-235



- The TransitVUE MP Series media players feature extensive connectivity for linking to the management system, including LAN/WAN and wireless connections.
- The TransitVUE MP Series media players are designed to be very robust, so that even if the connection to the content management server is broken, the player continues to run the existing play list. If a malfunction occurs during data transfer, the system can remember where the error occurred and retry to download the file, playback will resume from the breakpoint.
- The combination of dedicated software and carefully selected hardware components make the TransitVUE MP Series media players a compact and highly reliable 24/7 - system component.

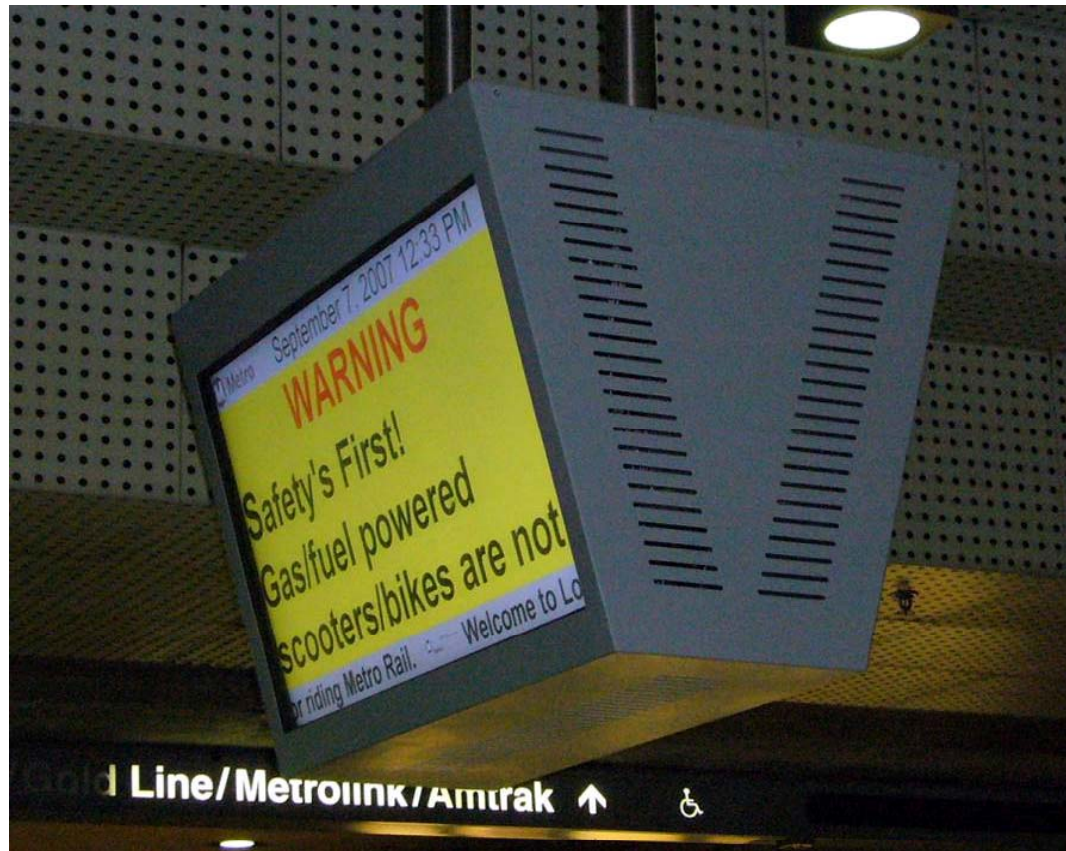


- The TransitVUE MP Series media players plays video, audio, Flash and PowerPoint files. Supported video and still image formats are MPEG 1, 2 and 4, AVI, WMV, JPEG, GIF, TIFF and BMP.
- On the audio side MP3 and WAV are supported. Internal data acquisition is also supported (MP235 model only).
- The players also have a Unicode support for displaying characters from languages like Spanish, Russian, Chinese and Arabic.

Some of the features of the TransitVUE MP Series media players include:

- Multiple outputs; VGA, DVI, audio, USB, data and more
- Auto-start of embedded software and latest play list
- Closed-box principle to prevent unauthorized access
- High network security level by a dedicated firewall, closed-box principle and proprietary protocol with encryption
- Plays wide range of open standard video & still picture formats
- Supports XGA and WXGA resolutions
- MPEG-2 hardware decoding for improved video playback
- Sturdy design and heavy duty hardware components

TransitVUE LCD Standard & Smart Monitors



... **TransitVUE® TPIS Real-Time Transportation Passenger Messaging & Information System**



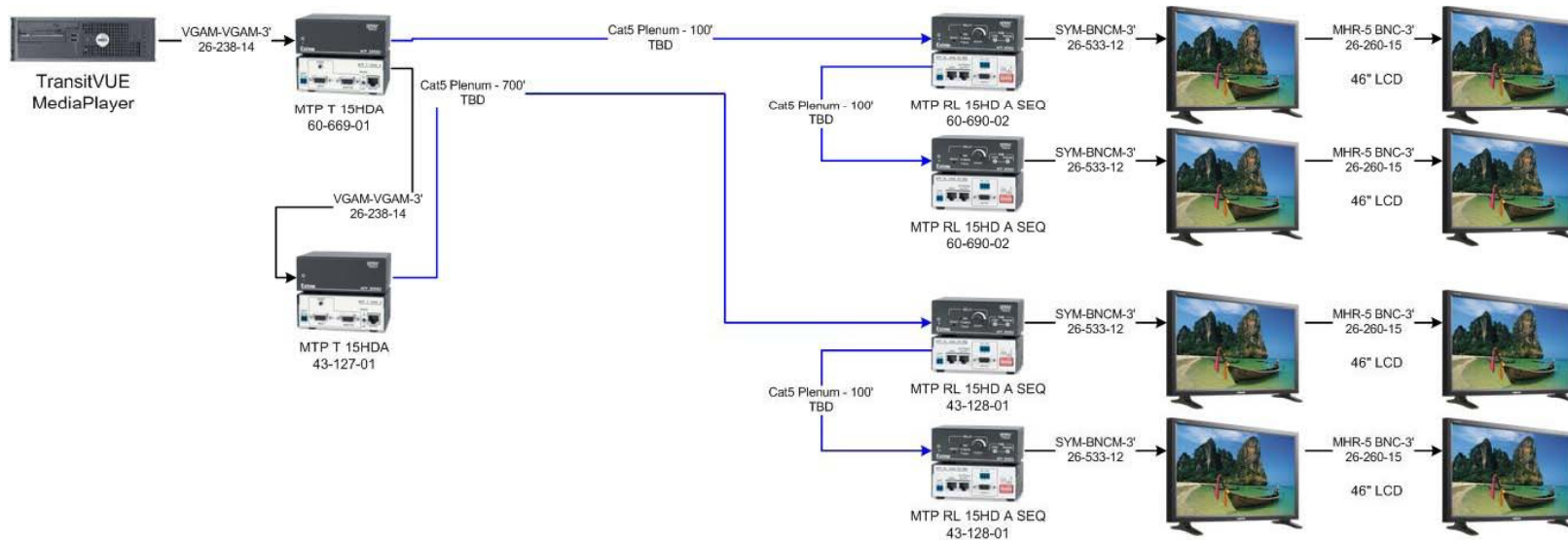
- The TransitVUE Series LCD display monitors are commercial grade for reliability and are available in various sizes ranging from 22" to 54".
- Both the TransitVUE standard & *smart* LCD monitors allow you to manage your costs, deliver stunning public display performance, and adapt to multiple applications with ease.
- Specialized display mounts with high impact 1/2" clear acrylic covers can be made to accommodate any new or existing infrastructure. The acrylic cover has an anti-glare and anti-graffiti coating, which will reduce reflections and enable easy removal of graffiti.

... ***TransitVUE® TPIS Real-Time Transportation Passenger Messaging & Information System***

Operational Flexibility for Various Applications

- Displays are network controllable for remote management
- Quiet and reliable fanless operation
- Enhanced zoom feature supports tiled matrix applications
- Wide format WXGA 1366 x 768 resolution for sharper display
- No permanent burn-in when static information is displayed
- Intelligent power management for lower consumption
- Heavy duty hardware mounting components
- Anti-theft lock and custom enclosure secures displays against theft

TransitVUE FOX Series VGA/DVI Video Extenders



... **TransitVUE® TPIS Real-Time Transportation Passenger Messaging & Information System**

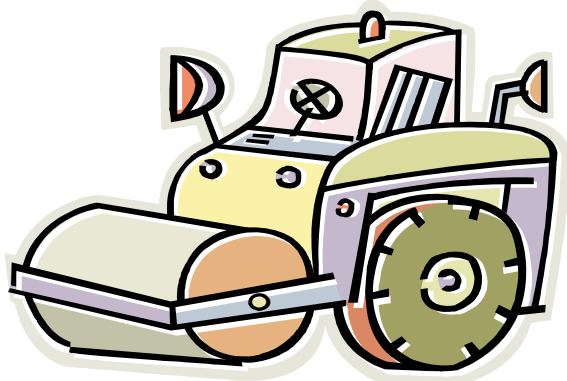
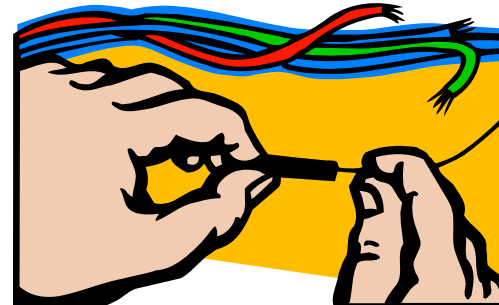
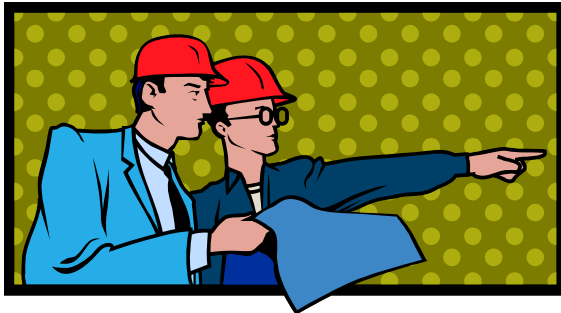


- The TransitVUE FOX series VGA/DVI video extender can be used to interconnect a TransitVUE station media player to multiple LCD display units.
- The TransitVUE video extenders are stand alone or rack mountable with up to sixteen (16) CAT 5e/6 ports, one (1) video input port, one (1) video output port, one (1) line-in, one (1) line-out audio port and one (1) RS232 port.
- The remote units are used for signal distribution from the station control unit to remote detection units via CAT 5e/6 copper or optical fiber cable.
- The fiber optic extender locates a single link digital DVI or VGA signal display up to 4,950 feet (1,500 meters) away from station media player.

WARRANTY

- All TransitVUE products come with a limited warranty on all parts and labor for three (3) full years from invoice date against defects in manufacturing. JM Fiber Optics will repair or replace any defective item to your satisfaction! All TransitVUE personnel are factory trained to service any portion of the system.
- All TransitVUE personnel are factory trained to service any portion of the system.
- Optional extended warranties are available!

MANAGING THE PROJECT



DESIGN AND ENGINEERING

- We have the capability of managing a complete fiber optic perimeter security system for you from start to finish. In the design stage we work closely with you to make sure we address all of your specific needs and concerns so that we can design your system to meet your current and future perimeter security concerns!
- Our advanced, yet cost effective design will make it possible to have the kind of perimeter security protection you require without “breaking the bank”. We utilize the latest design tools and our RCDD certified engineers are well versed on all the design standards and criteria.

INSTALLATION

- With over 13 years of installation experience, we can handle all of the installation process for you by using our ETA® technicians and installers or simply oversee and certify work done by the contractors of your choice. Either way, you will have the comfort of knowing that the installation was done right the first time!
- We are a licensed State of California contractor with extensive experience with fiber optic & copper infrastructure cabling, connector termination, fusion splicing, testing, trouble shooting and maintenance. Our personnel adhere to the latest TIA/EIA 568B installation standards and follow strict OSHA safety guidelines.

MAINTENANCE

- Once your system is installed, we will be there to maintain and service it for you!
- Day or night, **JM Fiber Optics** service personnel will be available 24 hours a day, 7 days a week, 365 days a year if required!
- We have personnel located locally to you, so our response time and associated service and maintenance costs will be significantly lower than other companies.

When you're ready to take the next step, we'll be there to

.....

***“CONNECT YOU TO THE FUTURE OF ACTIVE
DYNAMIC PASSENGER INFORMATION AND
MESSAGING SYSTEMS”***



... TransitVUE® TPIS Real-Time Transportation Passenger Messaging & Information System



For more information, please contact:

Ken Rivera – 909-628-3445

www.transitVUE.com

... TransitVUE® TPIS Real-Time Transportation Passenger Messaging & Information System